

SULFUR PRO^{Si}

ANALYSIS
8-0-0-10

SULFUR IS ONE OF THE MOST UNDER APPLIED AND LIMITING MACRO FERTILIZERS.

This is often due to a lack of understanding on proper application rates, as well as sulfur's high leachability - it simply doesn't remain in the soil the way nitrogen, phosphorus, and potassium does. Even when the correct rate of sulfur is applied early in the spring, heavy rainfall can cause significant losses. Conversely, applying sulfur based on your yield target can still result in deficiency if conditions are especially favorable for growth.

SulfurPro^{Si} helps tip the odds in your favor. By replacing 5–7 pounds of sulfur, it requires no additional capital investment and helps ensure your crop isn't short on sulfur during critical late-season reproductive stages.

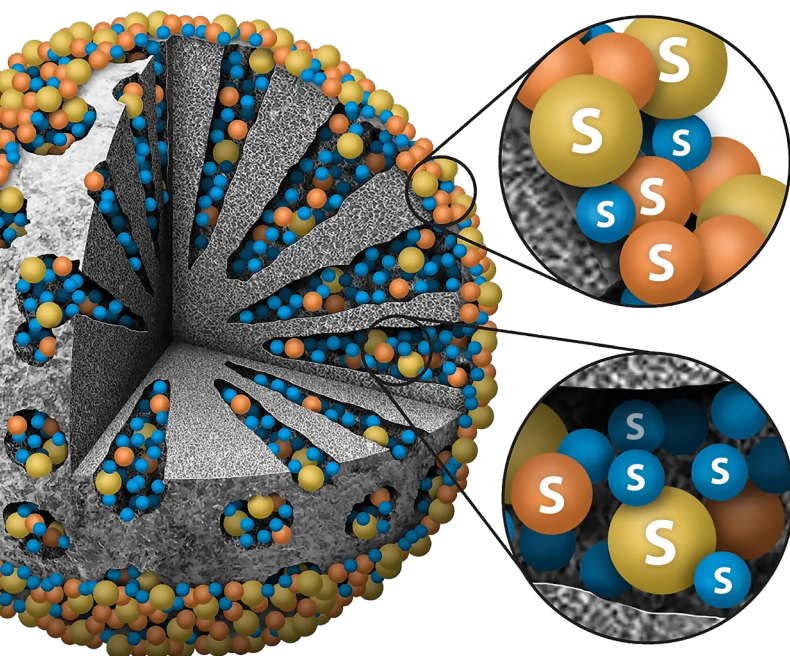
APPLICATION DETAILS:

RATE:	1 qt/acre
TIMING:	R1 - R4
CROPS:	Corn, soybean, wheat
DELIVERY:	Foliar application

APPLICATION NOTES:

- » Add SulfurPro^{Si} following crop inputs in sufficient water to ensure adequate coverage. Mix well. Adjuvant or surfactant products should be added after mixing SulfurPro^{Si} with crop inputs
- » SulfurPro^{Si} is not intended to replace adjuvant products

SULFURPRO^{Si} UTILIZES SILICA PARTICLE TECHNOLOGY



Sulfur ions are attracted to the silica particle and form an inner and outer layer of ions.

Each silica particle carries thousands of sulfur ions **rapidly into the plant cell** and release them once inside.

PRODUCT TIPS:

- » SulfurPro^{Si} is for supplemental nutrition only and is not meant to be a primary source of nutrients
- » SulfurPro^{Si} is highly compatible with most fertilizer blends

KEY BENEFITS:

- » Silica technology boosts the efficiency of your entire tank mix
- » Higher yields through higher nutrient efficiency
- » SulfurPro^{Si} is affordable with a positive ROI
- » SulfurPro^{Si} maximizes sulfur uptake to maximize yield